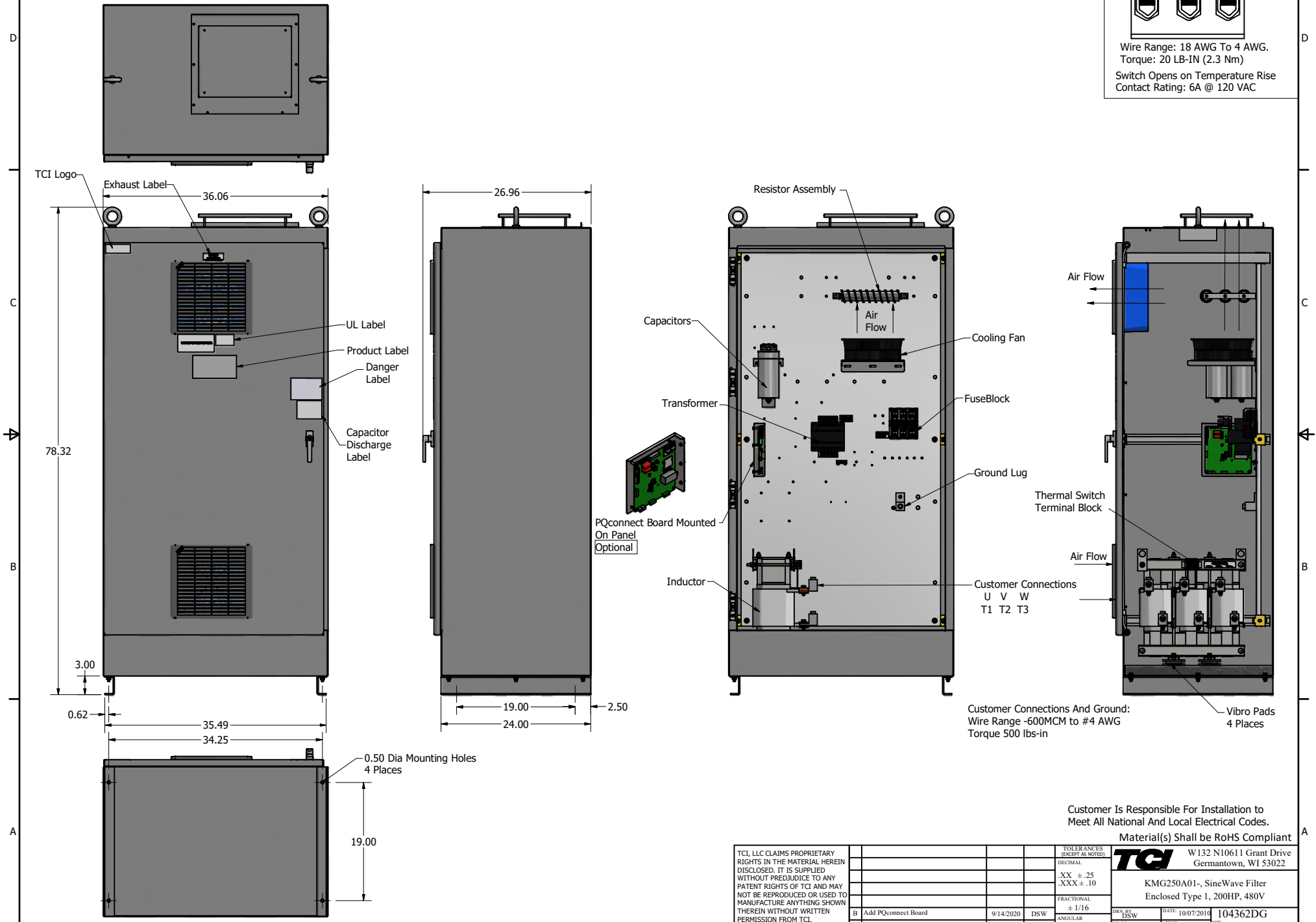
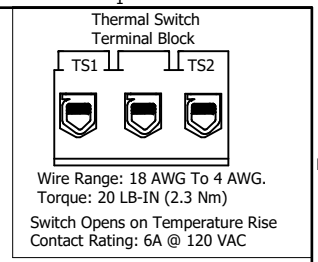


SineWave Part Number	Schematic Drawing#	Approx Weight (LBS)
KMG250A01A	24281-3A	769
KMG250A01P	24281-3P	774

HorsePower (HP)	kVar	Max Amps	Voltage (V)	HZ	Phase
200	20	250	480	60	3



Customer Connections And Ground:
Wire Range -600MCM to #4 AWG
Torque 500 lbs-in

Customer Is Responsible For Installation to Meet All National And Local Electrical Codes.

Material(s) Shall be RoHS Compliant

TCI, LLC CLAIMS PROPRIETARY RIGHTS IN THE MATERIAL HEREIN DISCLOSED. IT IS SUPPLIED WITHOUT PREJUDICE TO ANY PATENT RIGHTS OF TCI AND MAY NOT BE REPRODUCED OR USED TO MANUFACTURE ANYTHING SHOWN THEREIN WITHOUT WRITTEN PERMISSION FROM TCI.				TOLERANCES (EXCEPT AS NOTED)	W132 N10611 Grant Drive Germantown, WI 53022 KMG250A01- SineWave Filter Enclosed Type 1, 200HP, 480V 104362DG
				DECIMAL	
				.XX ±.25 .XXX ±.10	
				FRACTIONAL	
B Add PQconnect Board	9/14/2020	DSW		± 1/16	DESIGNED BY: DSW DATE: 10/07/2014 SCALE: 1/5.5 DRAWN BY: [] CHECKED BY: []
NO REVISION	DATE	BY		± 1°	104362DG SHEET 1 OF 1